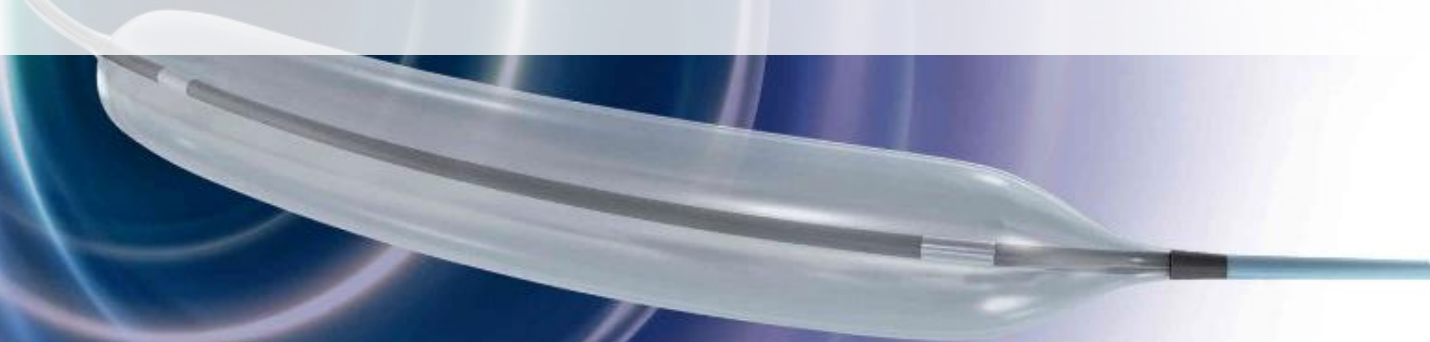


Accuforce[®]

Non compliant PTCA dilatation balloon catheter

Accuforce Technical presentation



Product Concept



Accuforce®

Non Compliant PTCA dilatation balloon catheter

 **TERUMO**

For internal use only. Do not copy or distribute

Product Description

Accuforce® PTCA dilatation catheter is the last generation of non-compliant balloon catheter.

It will offer improved accuracy of dilatation in high pressure while optimizing the crossability of Hiryu®.

Accuforce®

Non Compliant PTCA dilatation balloon catheter

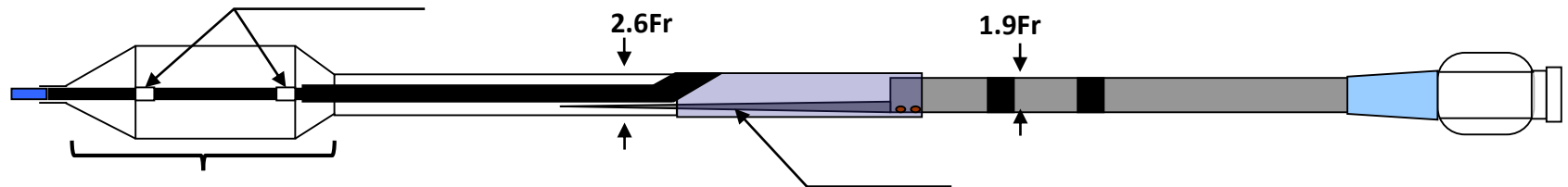
TERUMO

For internal use only. Do not copy or distribute

Technical Specifications :

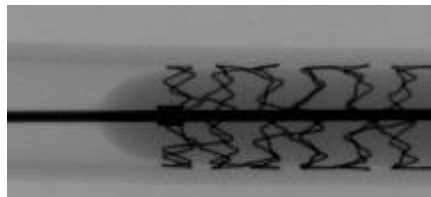
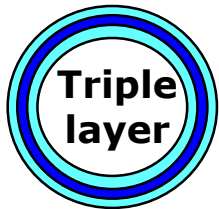
What's new in Accuforce development ?

Thin and short double radiopaque markers contribute to optimize the **Crossability**



Reinforced shaft offers **Enhanced pushability**

Triple layer structure and short shoulders generate **High pressure resistance up to 22 atm (RBP)**



Accuforce[®]

Non Compliant PTCA dilatation balloon catheter

TERUMO

For internal use only. Do not copy or distribute

Technical Specifications

Product (3.0mm size)	Accuforce
NP(atm)	12
RBP(atm)	22
Entry Profile(mm)	0.43
Balloon Profile	0.036"
Distal Shaft (Fr.)	2.6
Middle shaft (Fr.)	2.5
Proximal shaft (Fr.)	1.9
Hydrophilic coat	Full coat (6,8mm length: non-coated)
Catheter effective Length (cm)	145

Accuforce®

Non Compliant PTCA dilatation balloon catheter

TERUMO

For internal use only. Do not copy or distribute

Broad choices of sizes : 59 sizes

		Length (mm)						
		6	8	12	15	20	25	30
Diameter(mm)	2.00	●	●	●	●	●		
	2.25	●	●	●	●	●		
	2.50	●	●	●	●	●	●	●
	2.75	●	●	●	●	●		
	3.00	●	●	●	●	●	●	●
	3.25	●	●	●	●	●		
	3.50	●	●	●	●	●	●	●
	3.75	●	●	●	●	●		
	4.00	●	●	●	●	●		
	4.50	●	●	●	●			
	5.00	●	●	●	●			

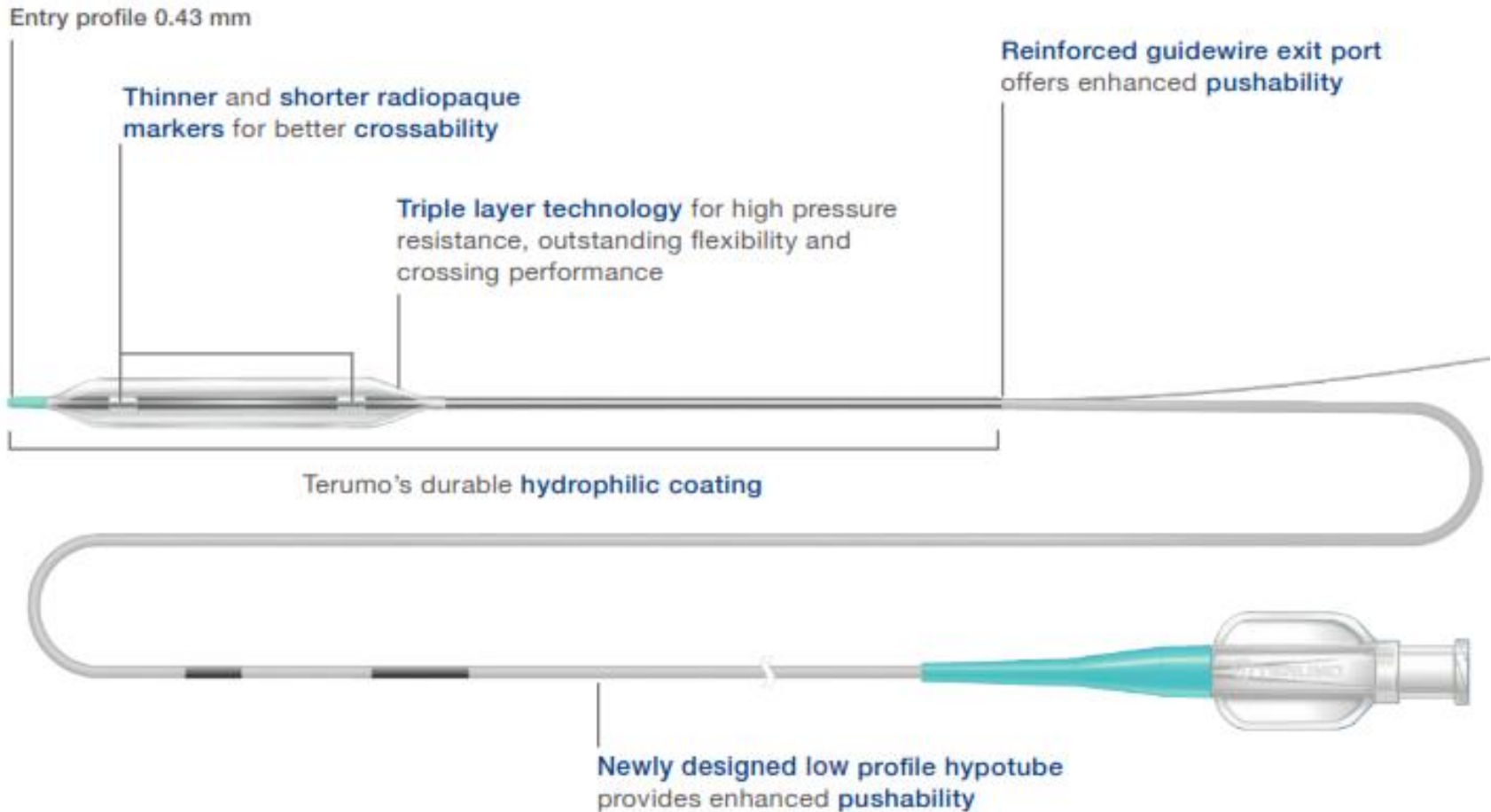
Accuforce®

Non Compliant PTCA dilatation balloon catheter

TERUMO

For internal use only. Do not copy or distribute

Overview of technical specifications



Accuforce®

Non Compliant PTCA dilatation balloon catheter

TERUMO

For internal use only. Do not copy or distribute