



Handheld Meter For Monitoring Lipid Profile

Product Specification

Methodology	Reflectance Photometric
Measurement	TC, TG, HDL, LDL*, HDL / LDL Ratio* TC / HDL Ratio*
Measurement time	3 minutes
Measurement range	Total Cholesterol 100 - 400 mg/dL Triglyceride 50 - 600 mg/dL HDL Cholesterol 20 - 80 mg/dL
Sample type	Capillary / Venous blood
Sample volume	15 µL for each (TC, TG & HDL)
Display	LCD (LED Backlight)
Calibration	Code-chip
Operational temperature	10° - 40°C / RH : <85%
Storage Condition	Meter : 4° - 40°C Strips : 8° - 30°C
Battery operational	3 X AAA 1.5V alkaline manganese batteries
Battery life	1,000 tests
Memory	1,000 tests
Operational buttons	3 buttons : a Power ON/OFF switch, up button and a down button

* Calculated



Handheld Meter For Monitoring Lipid Profile



CHOOSING QUALITY.

DiaSys Diagnostics India Private Limited

Unit No: 3B / 33 & 34, 3rd Floor,
Phoenix Paragon Plaza, LBS Marg,
Kurla West, Mumbai - 400 070.
Maharashtra, India
www.diasys.in

Call Us On
Toll free No. India
1800-200-1120
For calls out of India
+91 22 33 714344
Email Us at
customer.support@diasys.in



DiaSys

Diagnostic Systems

CHOOSING QUALITY.

Point of care. Anytime.
Anywhere.

General Information

Cardiovascular diseases (CVD) represent the first cause of death in the world, with more people dying annually from CVDs than from any other cause. An estimated 17.5 million people died from CVDs in 2012, representing 31% of all global deaths⁽¹⁾; of these deaths, about 7.4 million were due to coronary heart disease (CHD)⁽¹⁾.

Everyone aged 20 or older should have their blood lipids measured at least once every 5 years. The lipoprotein profile is an insightful test providing information on total cholesterol, HDL cholesterol, LDL cholesterol and triglycerides⁽²⁾.

(1) W. H. Organization et al., "Cardiovascular diseases (cvds). Fact sheet n 317. September 2011," Available at this website: <http://www.who.int/mediacentre/factsheets/fs317/en/index.html> (Updated September, 2009 and accessed on 5/11/2012), 2011.

(2) N. H. Lung, B. Institute et al., "High blood cholesterol: What you need to know," Retrieved October, vol. 6, p. 2002, 2001.

The American National Cholesterol Education Program (NCEP) Adult Treatment Panel (ATP) III recommends the following cut-off value:

Total Cholesterol	
<200 mg/dL	Normal
200 - 239 mg/dL	Borderline
≥240 mg/dL	High

Triglycerides	
<150 mg/dL	Normal
150 - 199 mg/dL	Borderline
200 - 499 mg/dL	High
≥500 mg/dL	Very high

HDL Cholesterol	
<40 mg/dL	Low
≥60 mg/dL	Normal

Features

Portable, palm-sized, easy to ship and store

Fingerprick sampling and small sample size (45 µL)

Provides rapid, accurate results from a small quantity of capillary blood

Quick results ideal for doctors' offices, labs and homes with optional external printer available

Large LCD display for easy reading

Test strips can be stored at room temperature

Battery operated, no power source necessary



Sample Type : Capillary, Venous (WB)



Results in 3 mins

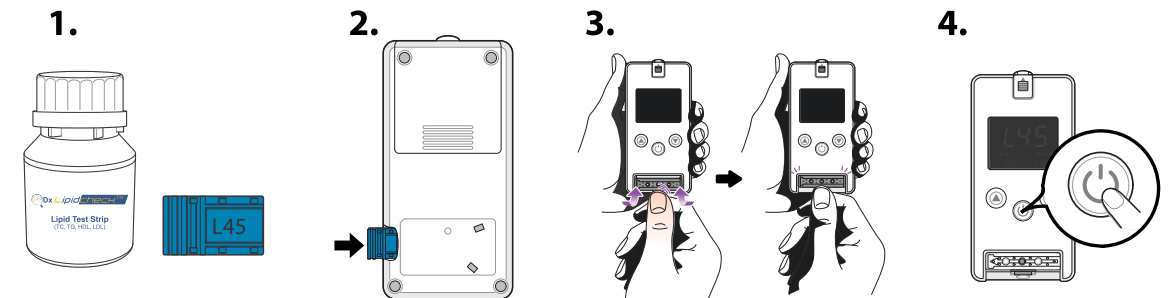


Small pack size (10 tests pack)



Convenient Storage Condition:
(8 - 30°C) Room Temperature

QDx Lipidcheck Testing Procedure

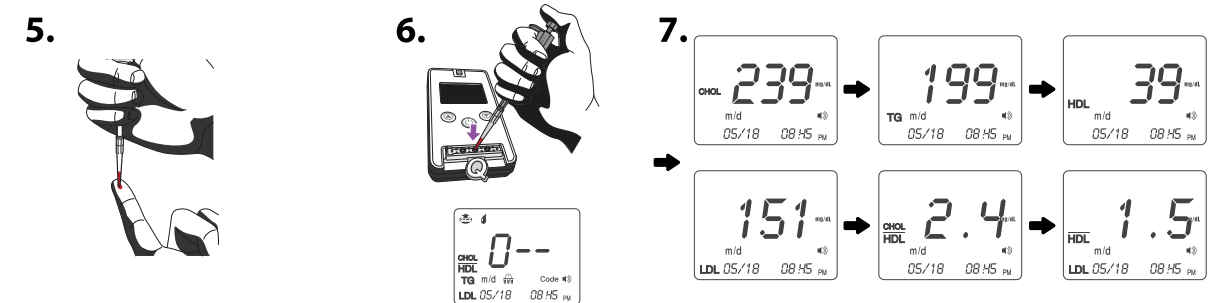


Ensure to match the code chip number with code number written on the test strip bottle.

Insert code chip correctly.

Insert test strip into the optical strip slot by pulling it up.

Press the power button and check code number.

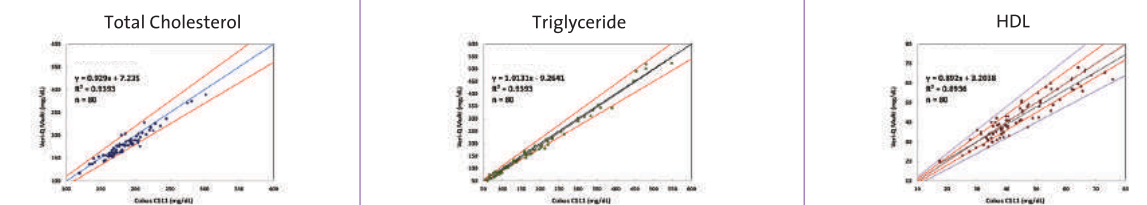


Hold the pipette so that the tip touches the blood samples on your fingertip. Carefully and slowly release the plunger of the pipette to draw blood into tip.

Place the pipette tip in the strip inlet. Press shutter button to transfer the blood to the strip.

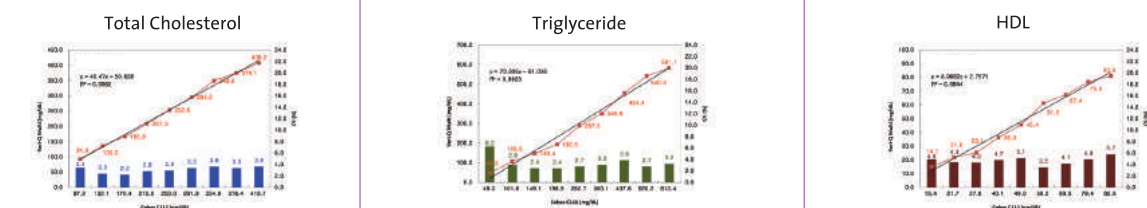
The result will be displayed in the following order :
CHOL→TG→HDL→LDL→CHOL/HDL→LDL/HDL

Accuracy



QDx Lipidcheck shows excellent correlation with Cobas C11 (Roche) for system accuracy in clinical evaluation and good performance

Precision



QDx Lipidcheck shows good performance for linearity & repeatability